



# MONTHLY MEMBERSHIP PROGRESS REPORT

District 5M 9

Results as of: 02/28/2018

GMT: MICHAEL MOLENDIA

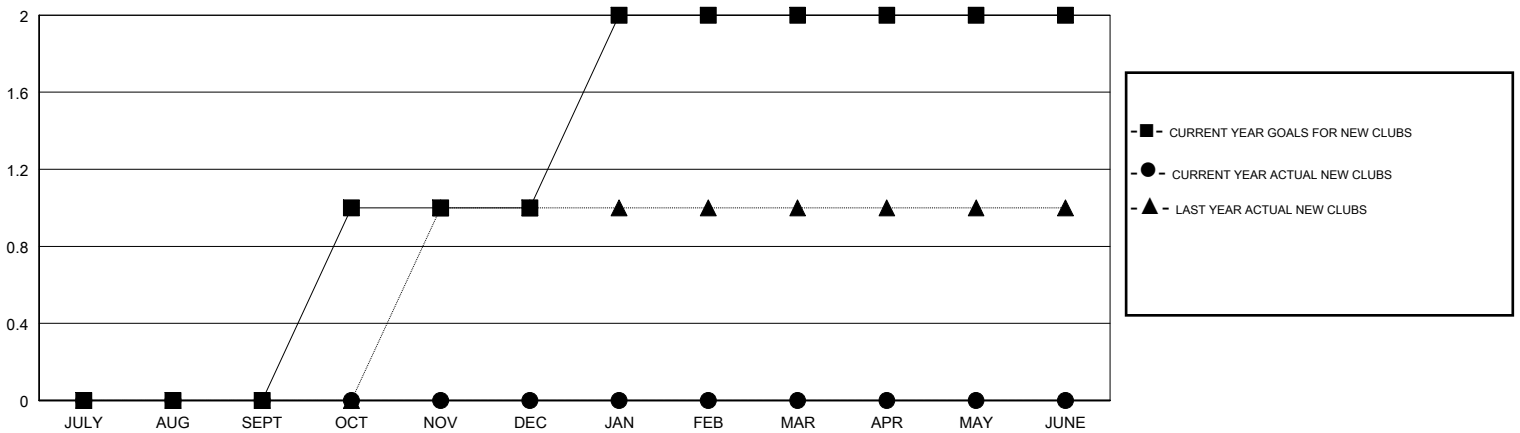
LOCATION MINNESOTA

GMT CA

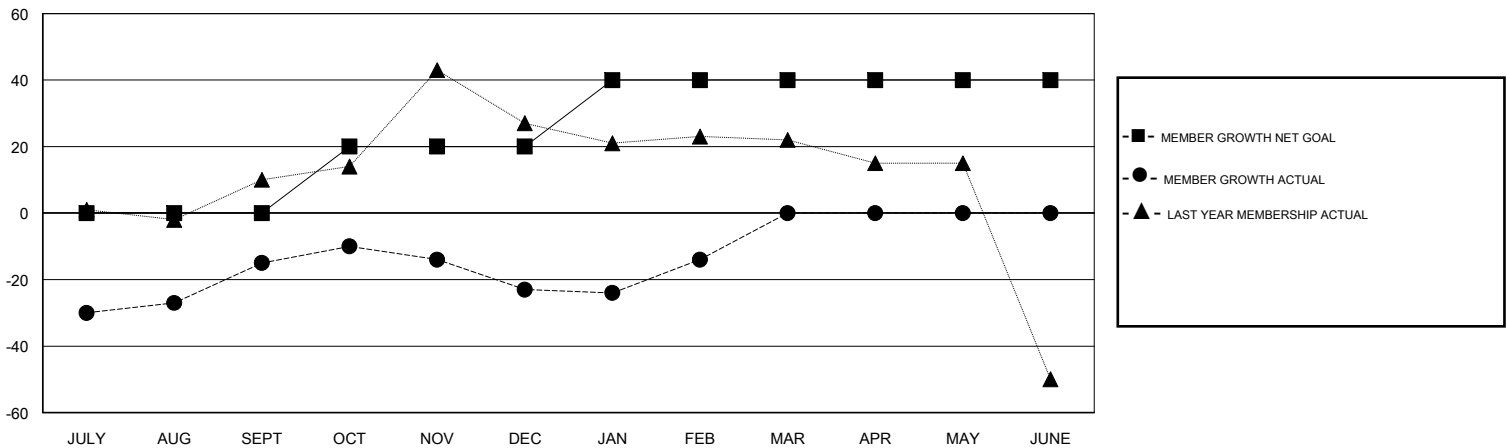
Clubs			
RESULTS FOR 2017-2018			
QUARTER	NEW CLUB GOAL	NEW CLUBS	DROPPED CLUBS
JULY/AUG/SEPT	0	0	0
OCT/NOV/DEC	1	0	0
JAN/FEB/MAR	1	0	0
APR/MAY/JUNE	0	0	0

Members			
RESULTS FOR 2017-2018			
QUARTER	MEMBER GROWTH NET GOAL	MEMBER GROWTH ACTUAL	DROPPED MEMBERS ACTUAL (including transfers)
JULY/AUG/SEPT	0	73	78
OCT/NOV/DEC	20	54	50
JAN/FEB/MAR	20	41	31
APR/MAY/JUNE	0	0	0

GOALS AND ACTUAL NEW CLUBS CUMULATIVE



GOALS AND ACTUAL MEMBERS CUMULATIVE



DROPPED CLUBS: 0	42 CLUBS OF 67 ADDED 1 OR MORE NEW MEMBERS	<u>GENDER DISTRIBUTION</u> MALE 1,431 (63.46%) FEMALE 824 (36.54%) Women Percentage Fiscal Year Goal: 38%
<u>DROPPED MEMBERS</u> DECEASED 31 CLUB CANCELLED 0 OTHER 129 TOTAL 160	<a href="#">CLICK HERE FOR CUMULATIVE MEMBERSHIP DATA</a>	TOTAL FAMILY UNIT MEMBERS 733 FAMILY MEMBERS PAYING HALF DUES 369